

School Improvement Plan 2025 26



At Sandy Lane Nursery and Forest School, we aim to work in partnership with all members of our school family to continue our journey of maintaining excellence. Our School Improvement Plan (SIP) sets out priorities that we want to achieve over the academic year. We would like to share our priorities with you, the positive impact these action will have for our children and how we can work together to help us achieve our goals.

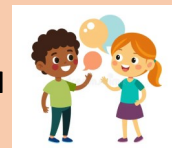
Leadership and Governance Led by Marcia



KEY PRIORITY – To continue to creatively secure ways to ensure the schools financial sustainability including wrap around care, our training offer and self funded places

IMPACT FOR CHILDREN – School will continue to be financially viable and therefore the children will continue to receive high quality experiences supported by knowledgeable and experienced staff. This will have a positive impact on outcomes for children

Curriculum Development, Teaching and Achievement Led by Jamie & Nikki



KEY PRIORITIES– To enhance current practice with a focus on communication and early literacy, securing consistently improved outcomes for children, particularly disadvantaged groups and those with SEND

IMPACT FOR CHILDREN– Staff skills and knowledge ensures curriculum delivery and adaptations meet children’s needs. Outcomes, including wellbeing are positively impacted as a result

Behaviour and Attitudes Led by Kirsten



KEY PRIORITY – To embed current practice of sustainability and climate change across the whole school

IMPACT FOR CHILDREN – Children and their families will have a greater understanding of environmental sustainability and how small changes in school and at home can have a positive impact

Personal Development and Wellbeing Led by Kirsten & Marcia



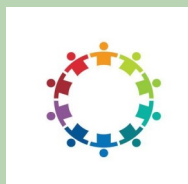
KEY PRIORITY –To embed the established culture of staff vigilance in identifying barriers to wellbeing faced by children and address these swiftly

IMPACT FOR CHILDREN – Children will be effectively supported and have improved wellbeing

How can parents/carers support our priorities?

We believe that working in partnership with parents/carers, as part of our Sandy Lane family, is vital to achieving our priorities and securing the improvement of the school. You can help us achieve our school priorities for this year by attending the parent/carer and child events, including workshops. These events will be an opportunity to share ideas of how you can support your child’s learning at home, which will in turn have a positive impact on their overall progress.

Parents/carers can also help by ensuring your child’s attendance is as good as it can be, enabling them to explore and engage in learning and develop their skills and knowledge by having time to practice and repeat activities. Helping your child at home with the learning staff post on Tapestry, working on their ‘next steps’ from VIP posts or Personal Plan targets. Using Tapestry to share things you have done at home with your child will also give staff valuable information about your child’s interests and talents, enabling them to create activities based around your child’s current fascinations to make new learning ‘stick’.



You can also help us to think of other ways we can work with parents/carers and support the school with these priorities by joining our **Friends of Sandy Lane** parent and carer group. This is a friendly and informal group that meet half termly. Dates for meetings are posted on Tapestry and also displayed around school. If you would like any more information about this group please speak with Marcia or Kirsten on the door at drop off or collection.